

Facts

Portfolio value	\$381.55 mn
Fund commenced	28 January 2005
Minimum investment	A\$20,000 or NZ\$25,000
Regular Investment Plan (min.)	A\$200 or NZ\$250 per mth/qtr
Income distribution date	Annual, 30 June
Unit valuation	Sydney Business Day
Unit prices	App - 1.4898 Red - 1.4823

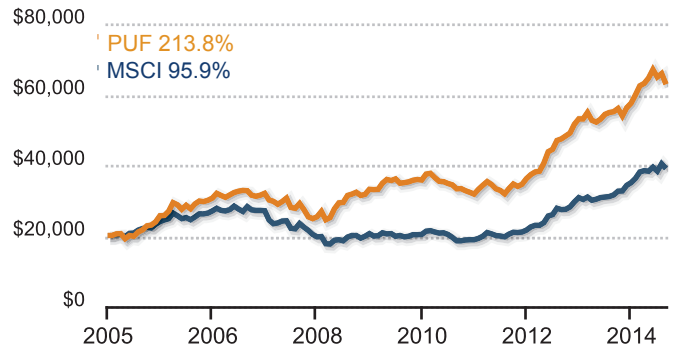
Performance¹

	FUND %	MSCI %
1 month	(4.54)	(3.52)
3 months	(6.17)	(0.95)
6 months	0.79	2.48
Calendar year to date	9.42	11.34
1 year	14.20	23.64
2 years (compound pa)	15.23	19.36
3 years (compound pa)	23.59	24.06
5 years (compound pa)	12.45	14.70
7 years (compound pa)	11.63	7.53
10 years (compound pa)	11.27	5.89
Since inception (compound pa)	11.42	6.56

Fees

Entry fee	Nil
Exit fee	Nil
Management Expense Ratio/ Indirect Cost Ratio (MER/ICR)	1.54% per annum (inclusive of investment & administration costs)
Brokerage paid	Nil
Buy/sell spread	0.5% total

Performance graph²



Source: Factset and Platinum

Invested positions³

	LONG %	NET %	CURRENCY %
Australia	0.3	0.3	1.5
Austria	4.6	4.6	
Brazil	0.3	0.3	0.3
Canada	1.1	1.1	1.1
China	8.3	8.3	
China Ex PRC	13.6	13.6	
Hong Kong	0.9	0.9	11.3
France	2.2	2.2	
India	2.3	2.3	2.4
Italy	2.9	2.9	
Japan	10.0	10.0	10.5
Kenya	0.6	0.6	0.6
Korea	3.7	3.7	3.7
Malaysia	0.5	0.5	0.5
Russia	2.3	2.3	
Spain	2.2	2.2	
Sweden	1.5	1.5	1.5
Switzerland	4.2	4.2	4.2
Thailand	0.8	0.8	0.8
United Kingdom	8.7	8.7	4.6
United States	22.6	22.6	44.0
	93.7	93.7	
Euro Currency			12.9
Cash	6.3	6.3	
Total	100.0	100.0	100.0

Long - 74 stocks, 2 swaps, 1 bond

Top ten positions⁴

STOCK	COUNTRY	INDUSTRY	%
PICC Property & Casualty Co	China Ex PRC	Financials	4.5
Carnival Corp	UK	Cons Discretionary	4.4
Markit Ltd	USA	Financials	3.5
Google Inc	USA	Info Technology	3.0
Intesa Sanpaolo SpA	Italy	Financials	2.9
Intel Corp	USA	Info Technology	2.7
AstraZeneca PLC	UK	Health Care	2.7
Kweichow Moutai P Note Exp	China	Consumer Staples	2.6
Erste Group Bank Ltd	Austria	Financials	2.5
Cisco Systems Inc	USA	Info Technology	2.5

Industry breakdown³

SECTOR	LONG %	NET %
Info Technology	25.2	25.2
Financials	24.0	24.0
Cons Discretionary	13.7	13.7
Industrials	12.2	12.2
Health Care	5.6	5.6
Consumer Staples	5.4	5.4
Telecom Services	2.8	2.8
Energy	2.5	2.5
Materials	1.4	1.4
Utilities	0.8	0.8

1. Investment returns are calculated using the Fund's unit price and represent the combined income and capital return for the specified period. They are net of fees and costs (excluding the buy-sell spread and any investment performance fee payable), pre-tax, and assume the reinvestment of distributions. The investment returns shown are historical and no warranty can be given for future performance. You should be aware that historical performance is not a reliable indicator of future performance. Due to the volatility of underlying assets of the Fund and other risk factors associated with investing, investment returns can be negative (particularly in the short-term).

2. The investment returns depicted in this graph are cumulative on A\$20,000 invested in the Fund since inception relative to the MSCI All Country World Net Index in A\$. The investment returns are calculated using the Fund's unit price. They are net of fees and costs (excluding the buy-sell spread and any investment performance fee payable), pre-tax and assume the reinvestment of distributions. It should be noted that Platinum does not invest by reference to the weightings of the Index. Underlying assets are chosen through Platinum's individual stock selection process and as a result holdings will vary considerably to the make-up of the Index. The Index is provided as a reference only.

3. The "Long %" represents the exposure of physical holdings and long stock derivatives. The "Net %" represents the exposure of physical holdings and long derivatives.

The "Currency %" represents the currency exposure for the Fund's Portfolio.

4. Top Ten positions shows the Fund's top long share exposure positions. Long derivative exposures are included.

Platinum Investment Management Limited ABN 25 063 565 006 AFSL 221935, trading as Platinum Asset Management ("Platinum") is the responsible entity and issuer of units in the Platinum Unhedged Fund (the "Fund"). The Platinum Trust Product Disclosure Statement No. 9 and Supplementary PDS ("together PDS") provides details about the Fund. You can obtain a copy of the PDS from Platinum's website www.platinum.com.au, or by contacting Investor Services on 1300 726 700 (Australian investors only), 0800 700 726 (New Zealand investors only), or 02 9255 7500, or via invest@platinum.com.au.

Before making any investment decision you need to consider (with your financial adviser) your particular investment needs, objectives and financial circumstances. You should refer to the PDS when deciding to acquire, or continue to hold, units in the Fund.

DISCLAIMERS: Some numerical figures in this Fact Sheet have been subject to rounding adjustments. The information presented in this Fact Sheet is not intended to be advice. It has not been prepared taking into account any particular investor's or class of investor's investment objectives, financial situation or needs, and should not be used as the basis for making investment, financial or other decisions. To the extent permitted by law, no liability is accepted for any loss or damage as a result of any reliance on this information. Platinum does not guarantee the repayment of capital, payment of income or the Fund's performance. Platinum is a member of the Platinum Group of companies.